

# Ultrasonic Lab120

## For axial probes



## TYPICAL APPLICATIONS

- Homogenisation
- Degassing
- Enzyme/DNA extraction
- Emulsification
- Reaction acceleration
- Bacterial destruction
- Sonochemistry
- Cell lysis
- Extraction...

## TITANIUM PROBES

### Probe 16D3

Diameter: 3 mm

Sample volume\*: 0.2 - 50ml

Amplitude: up to 140µm

### Probe 22D6

Diameter: 6 mm

Sample volume\*: 2 - 50ml

Amplitude: up to 140µm



## FEATURES

### Processor NextGen Lab120

- Max. power: 120WRMS
- Frequency: 35kHz
- Amplitude setting: 10% - 100%
- Control mode: auto-tuned frequency mode
- Dimensions (LxWxH): 330x145x148mm
- US Start/Stop by Labtablet, dry contact, footswitch or laptop

### 35kHz ultrasonic transducer

- Diameter: 40mm
- Length: 100.5mm
- Air cooling input/output

### LabTablet for intuitive setting

NextGen software, « Start » version

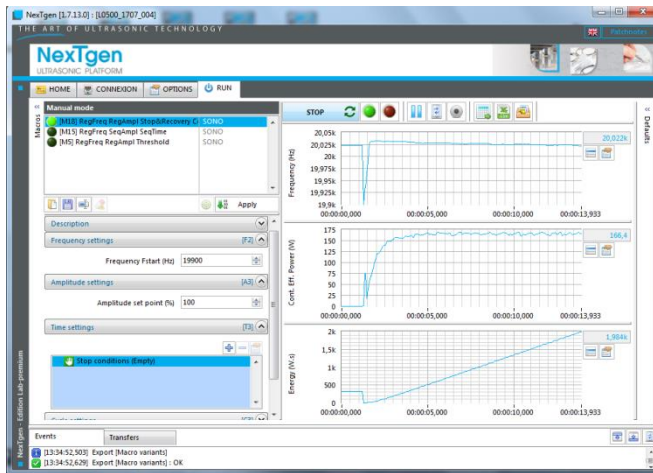
# OPTIONS

## LabPremium software - traceability, temperature-related operation, worldwide remote assistance

In addition to the functions of our « Start » software, full traceability of the processes is guaranteed by continuous registration of all data and the possibility of its exportation to Excel (data logger principle).

Our LabPremium software likewise enables to link the operation of the equipment to temperature conditions. For example, as soon as a certain sample temperature is reached, the operation stops or continues by cycles, according to your settings.

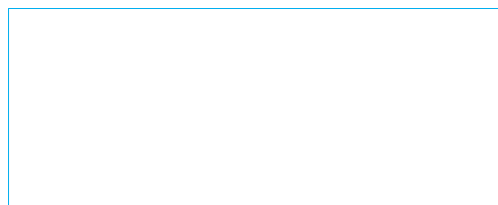
The LabPremium is also particularly appreciated for its “quick diagnosis” functionality and the given possibility of worldwide remote assistance.



# ACCESSORIES

<b>TEMPERATURE SENSOR</b>	Associated to the NexTgen LabPremium PC-software, it enables to temperature monitoring and temperature-related operation.
<b>SOUND DAMPING ENCLOSURE</b>	Comprises the support stand and clamp to fix the transducer. Size (HxWxD): approx. 800x400x400mm. Exits with a drawer (option).
<b>STAND AND CLAMP</b>	Holds the system in place during operation.
<b>LIFTING SUPPORT</b>	Permits to adjust the height in order to properly immerse the probe.
<b>FOOTSWITCH</b>	Activates the ultrasounds remotely.

## Your local distributor



SINAPTEC

SYNERGIE PARK, 7 avenue Pierre et Marie Curie, 59260 Lezennes, FRANCE

+33 (0)3 20 61 03 89

sinaptec@sinaptec-ultrasonic.com